

Charging Base

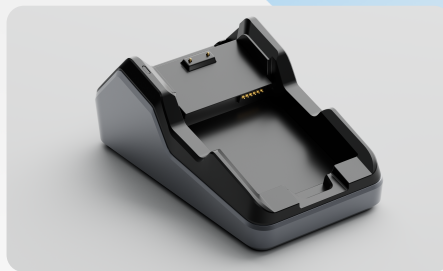
M20 Family



SPECIFICATIONS



Basic Charging Base
(Terminal Only)



Standard Charging Base
(1 terminal + 1 battery)



Communication Base

Power supply	5V DC 2A (USB-C Charging)	Power supply	19V DC 2.1A DC Port	Power supply	19V DC 2.1A DC Port
Environment Editor	Operating temperature: 0°C to +40°C Storage temperature: -20°C to +70°C Operating humidity: 10% to 90% non-condensing	Environment Editor	Operating temperature: 0°C to +40°C Storage temperature: -20°C to +70°C Operating humidity: 10% to 90% non-condensing	Environment Editor	Operating temperature: 0°C to +40°C Storage temperature: -20°C to +70°C Operating humidity: 10% to 90% non-condensing
Dimensions	156.3×93.8×68.6mm (L×W×H)	Dimensions	156.3×93.8×68.6mm (L×W×H)	Dimensions	156.3×93.8×68.6mm (L×W×H)
Led for battery charging	None	Led for battery charging	Red: The battery is not connected Blue: The battery is charging Green: The battery is fully charged	Led for battery charging	Red: The battery is not connected Blue: The battery is charging Green: The battery is fully charged
Port	None	Port	None	Port	RJ45 Ethernet, RJ22 Serial, USB Type A USB-Type C (Communication only)

LANDI

LANDI reserves the right to modify or update any information provided herein without prior notice, including the design, construction, materials, processing, or specifications of any products. Additionally, LANDI may discontinue or restrict the production or distribution of any products.

